

Commodity Weekly Technicals

Wednesday, 30 October 2013

Technical Outlook



App versions now available, search 'Commerzbank Research' through the App store or Google play.

Karen Jones
+44 207 475 1425
Karen.jones@commerzbank.com

Axel Rudolph
+44 207 475 5721
axel.rudolph@commerzbank.com



For important disclosure information please see end of the document.

Technical Outlook

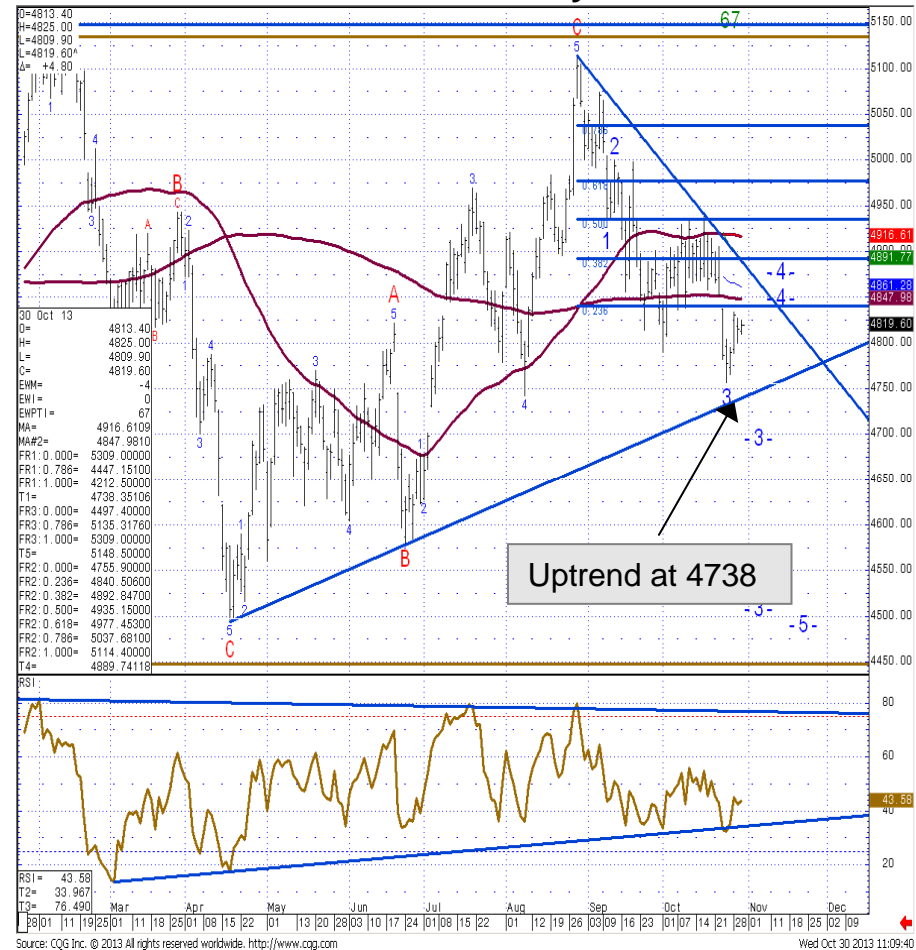
Market	Short term view (1-3 weeks)
S&P GSCI TR Index:	Held initial test of 6 month uptrend.
NYMEX Light Crude Oil:	Rebound from Fibon support viewed as corrective only and is expected to fail ahead of the 102.24 downtrend
ICE Brent Crude Oil:	Rebound suggests that market is reluctant to break lower currently, but is expected to struggle to maintain a foothold over 112.00
NYMEX Heating Oil:	Loss of downside momentum suggests near term consolidation ahead of further losses
ICE Gasoil:	Rebound ahead of 900 neutralises chart
NYMEX Natural Gas:	Eroding short term uptrend, risks remain on downside
RBOB Gasoline:	Divergence of the daily RSI implies a corrective rebound ahead of further losses
LME Copper:	Negative bias intact below the 200 day ma at 7374
LME Aluminium:	Rally approaching tougher resistance at 1897/1981
LME Nickel:	Gearing up to challenge and we suspect overcome the 200 day ma at 15201
LME Zinc:	Looking for a challenge of the 2009/2021 resistance
ICE ECX Emissions Dec:	Trendline holding ...but rebound indicated to remain tepid
Phelix January 2014:	More positive BUT July high at 38.45 needs to be overcome to reassert upside pressure.
Spot Gold:	Only the break of the 2013 resistance line at 1360 will confirm that another up leg is made

S&P GSCI Total Return Index

Held initial test of 6 month uptrend.

- › The S&P GSCI Total Return Index has sold off towards and recovered just ahead of the 6 month uptrend at 4738.
- › Rallies are indicated to terminate circa 4848/77. We suspect that the market will now remain capped by the 4990/5000 region, and we should see a retest of the 4738 6 month uptrend.
- › This remains the break down point to key support, which remains the 4 year uptrend at 4664. We would expect to see this hold the initial test.
- › Only a move above 5185 would imply ongoing strength to the 5400 2012 high. Currently we are neutral to negative – the market is sidelined longer term. A weekly close below the 4 year uptrend would be required to alter this.

S&P GSCI Total Return Index Daily Chart



S&P GSCI Total Return Index – Weekly Chart

S&P GSCI Total Return Index Weekly Chart



Source: CQG Inc. © 2013 All rights reserved worldwide. <http://www.cqg.com>

Tue Oct 29 2013 08:54:44

Nymex Light Crude Oil

Rebound from Fibo support viewed as corrective only and is expected to fail ahead of the 102.24 downtrend

- › WTI crude oil has sold off to the 61.8% retracement at 95.78 and 55 week ma at 96.35 and bounced from here. The rebound is indicated to terminate circa 99.40/101.50. Provided the 104.38 early October high continues to hold the topside, we will maintain a negative bias.
- › The 200 day ma at 98.70 offers immediate overhead resistance. Beyond this rebound and near term consolidation, we will look for further weakness. Failure at 95.78 will target the 200 week ma at 91.54 and eventually the 2010-2013 support line at 87.50.
- › Currently the Elliott wave count on the daily chart is suggesting that rallies will terminate ahead of 101.50 and this current sell off will reach sub 90.00.

NYMEX Light Crude Oil Daily Continuation Chart



NYMEX Light Crude Oil – Weekly Chart

Market has reacted back to the 55 week ma at 96.35

NYMEX Light Crude Oil Weekly Continuation Chart



Source: CQG Inc. © 2013 All rights reserved worldwide. <http://www.cqg.com>

Tue Oct 29 2013 09:25:54

Brent vs WTI Spread – Weekly Chart

Brent vs WTI Spread Weekly Continuation Chart



Source: CQG Inc. © 2013 All rights reserved worldwide. <http://www.cqg.com>

Wed Oct 30 2013 11:12:48

ICE Brent Crude Oil

Rebound suggests that market is reluctant to break lower currently, but is expected to struggle to maintain a foothold over 112.00

- › Brent crude Oil has sold off towards but recovered just ahead of the 105.73 end of July low. This sharp rebound depicts a market that is reluctant to break down presently. But equally should struggle to regain a foothold over the 112.00 mid October high.
- › To inflict further damage a close will be needed below the 105.73 end of July low.
- › Failure at 105.73 will trigger further losses to the 200 week ma at 102.67. This has underpinned the chart since mid 2010.
- › A close above 112.00 will see a rally to 114.97, the 78.6% retracement and then the 117.34 recent high (not favoured).
- › Above the 117.34 recent high will introduce scope to the 119.17 February high.

ICE Brent Crude Oil Daily Continuation Chart



NYMEX Heating Oil

Loss of downside momentum suggests near term consolidation ahead of further losses

- › NYMEX Heating Oil has eroded but not sustained the break below the 2.9193 August low. The divergence of the daily RSI points to a loss of downside momentum and we would allow for further near term strength and consolidation. Provided the rally remains capped by the 3.0806 mid October high, a negative bias will remain.
- › Given that the market has been sidelined for the past 2 years it is feasible that the market is just sidelined to preserve the longer term range. At this point we are unable to rule out a deeper retracement to the 61.8% retracement of the recent move down from the August peak. This lies at the 3.11 zone.
- › **HOWEVER** the range is starting to resemble a potential top and loss of 2.8464 will trigger losses to the 200 week ma at 2.7722 and the 2.7255 2013 low.
- › A close above 3.11 would introduce scope for another run up towards the 3.20 region, but we again look for signs of failure.

NYMEX Heating Oil Daily Continuation Chart



Heating Oil – Weekly Chart

Has sold off towards the lower parameter 2.8692 of its contracting range

NYMEX Heating Oil Weekly Continuation Chart

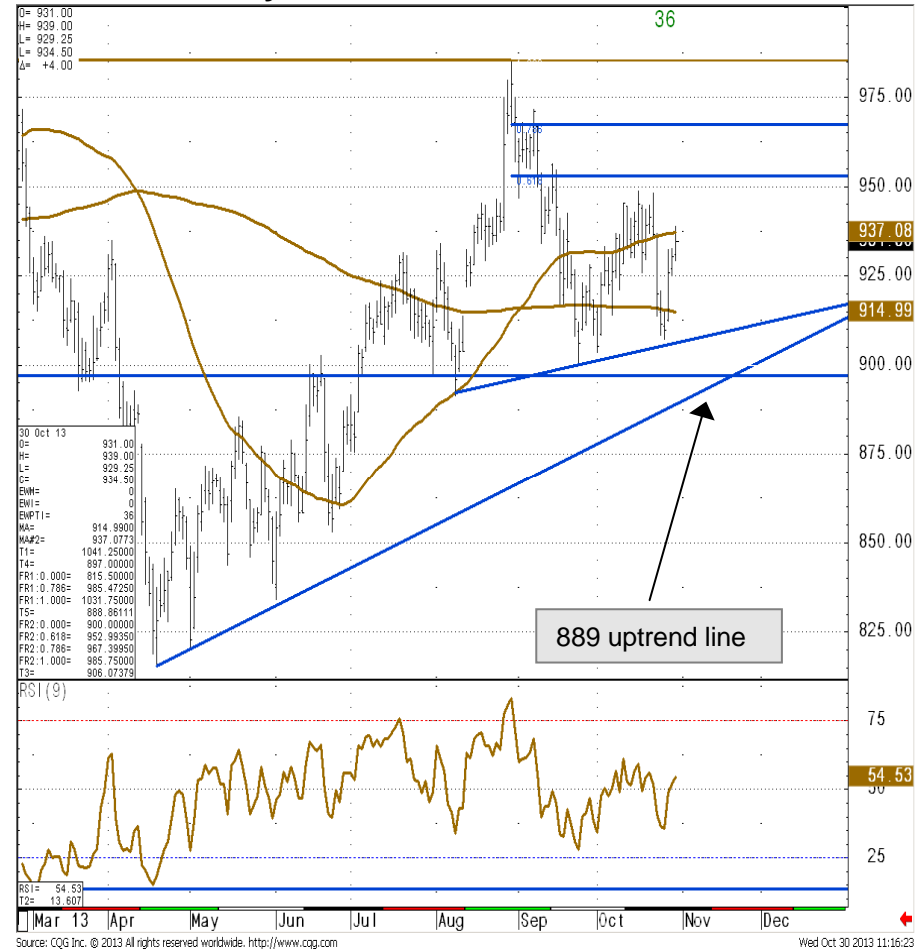


ICE Gasoil

Rebound ahead of 900 neutralises chart

- › ICE Gasoil again sold off towards and recovered ahead of the 900 psychological support zone. This has neutralised the immediate outlook. Currently we would allow for a re-attempt on the 950/953 high from last week and the 61.8% retracement, but suspect that this will again hold the topside.
- › While capped by 953 attention should revert to 900 and then the 889 7 month support line. Further support lies at the 891.50 August low. Failure at 885 should trigger losses towards the 200 week ma at 867.43. This remains the major break down point to 815.50 2013 low.
- › Above 953 (61.8%) would re-introduce scope for a re test of the 985.75 August high. It is also the location of the 78.6% retracement (at 985.47) and, if challenged, we again look for this to hold the topside.
- › Slightly longer term, the market is range bound to neutral in a very large range.
- › The downside is underpinned by the 200 week ma at 867.43 and the topside capped by the 2011-2013 downtrend line at 1018.95.

ICE Gasoil Daily Continuation Chart



NYMEX Natural Gas

Eroding short term uptrend, risks remain on downside

- › Natural Gas has started to erode the short term support line. We have seen the market recently repeatedly test and fail at the 3.8350 July peak. Risk remains on the downside.
- › The near term support line has been eroded, which leaves the 3.40 September low exposed. Loss of 3.40 is needed to undermine near term stability and should eventually lead to a slide back to the 3.129 August low.
- › Only a close above 3.8350 will negate our view and target the 4.1625/78.6% retracement and introduce scope to the 4.44 the 2013 high (not favoured).
- › For now we look for further weakness.
- › A negative bias will be maintained while natural gas is trading below the 3.835 July peak on a daily closing basis.

NYMEX Natural Gas Daily Continuation Chart



NYMEX RBOB Gasoline

Divergence of the daily RSI implies a corrective rebound ahead of further losses

- › The recent low of 2.5418 was accompanied by a divergence of the daily RSI. This depicts a loss of downside momentum and we would allow for some consolidation. The market has recently broken below the 4 year uptrend, the 2.6879 April low and the 200 week ma and we look for the market to come under pressure slightly longer term.
- › Any near term rebounds should now ideally fall well short of the 55 and 200 day moving averages at 2.7602/2.8847. This move has been damaging from a longer term perspective and we would allow for further weakness longer term. Beyond this near term rebound, our attention will revert to the 2.4440 November 2011 low.
- › Please note that the market has been contained in a converging range for some time (years) and the market now appears to be in the process of breaking down from this range.
- › A close below 2.4440 will introduce scope for a target sub 2.000 longer term.

RBOB Gasoline Daily Continuation

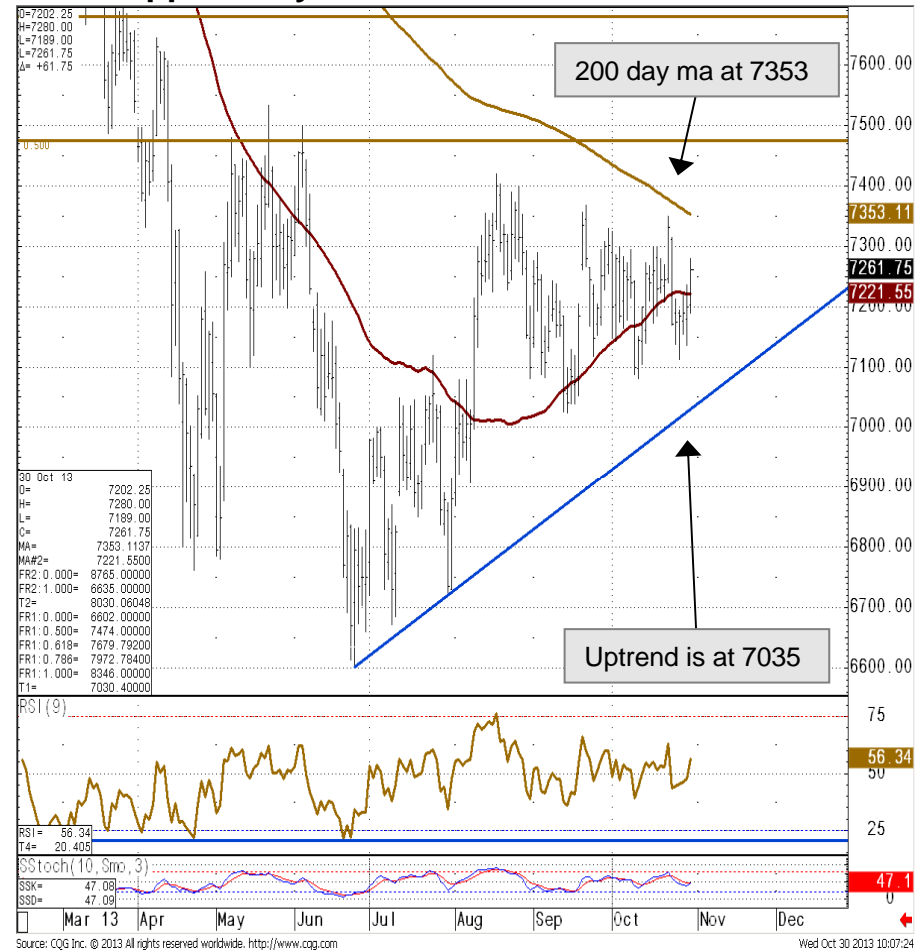


LME Copper

Negative bias intact below the 200 day ma at 7374

- › LME Copper continues to grind higher and looks set to retest the 7353 200 day ma and the 7534 May high. These continue to cap the topside and while they continue to do so, a negative bias will be maintained. Please note that the 55 week ma is also located here at 7479.
- › Failure here should see a slide back to the 5 month support line at 7035 as well as the late July low at 6721, both of which will be targeted while no daily chart close above the May peak at 7534 is being made.
- › Failure at 6721 will shift attention back to major support at 6635/05 (October 2011 low and 50% retracement of the move up from 2008 to 2011).
- › Below 6635/05 would trigger another leg lower to 6037.50, the low seen in 2010.
- › A daily close above 7534 however would mean a continuation of the August advance and target the 61.8% Fibonacci retracement at 7680 and the 2011-2013 resistance line at 7605.

LME Copper Daily Chart

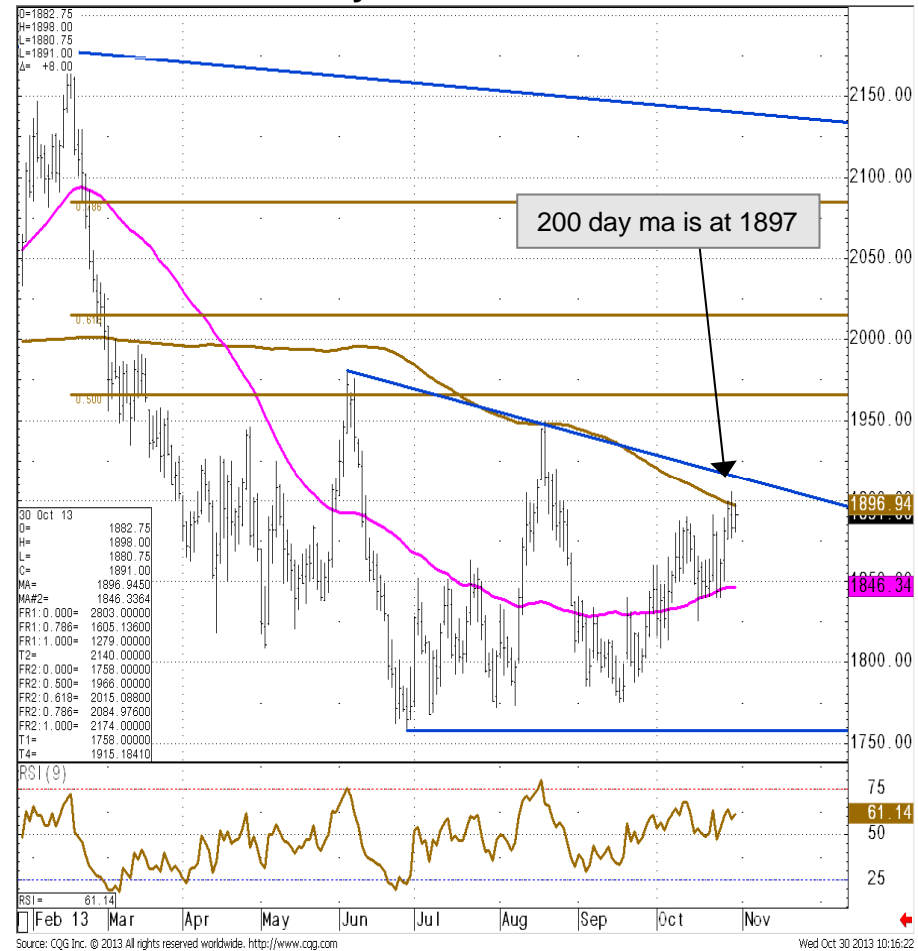


LME Aluminium

Rally approaching tougher resistance at 1897/1981

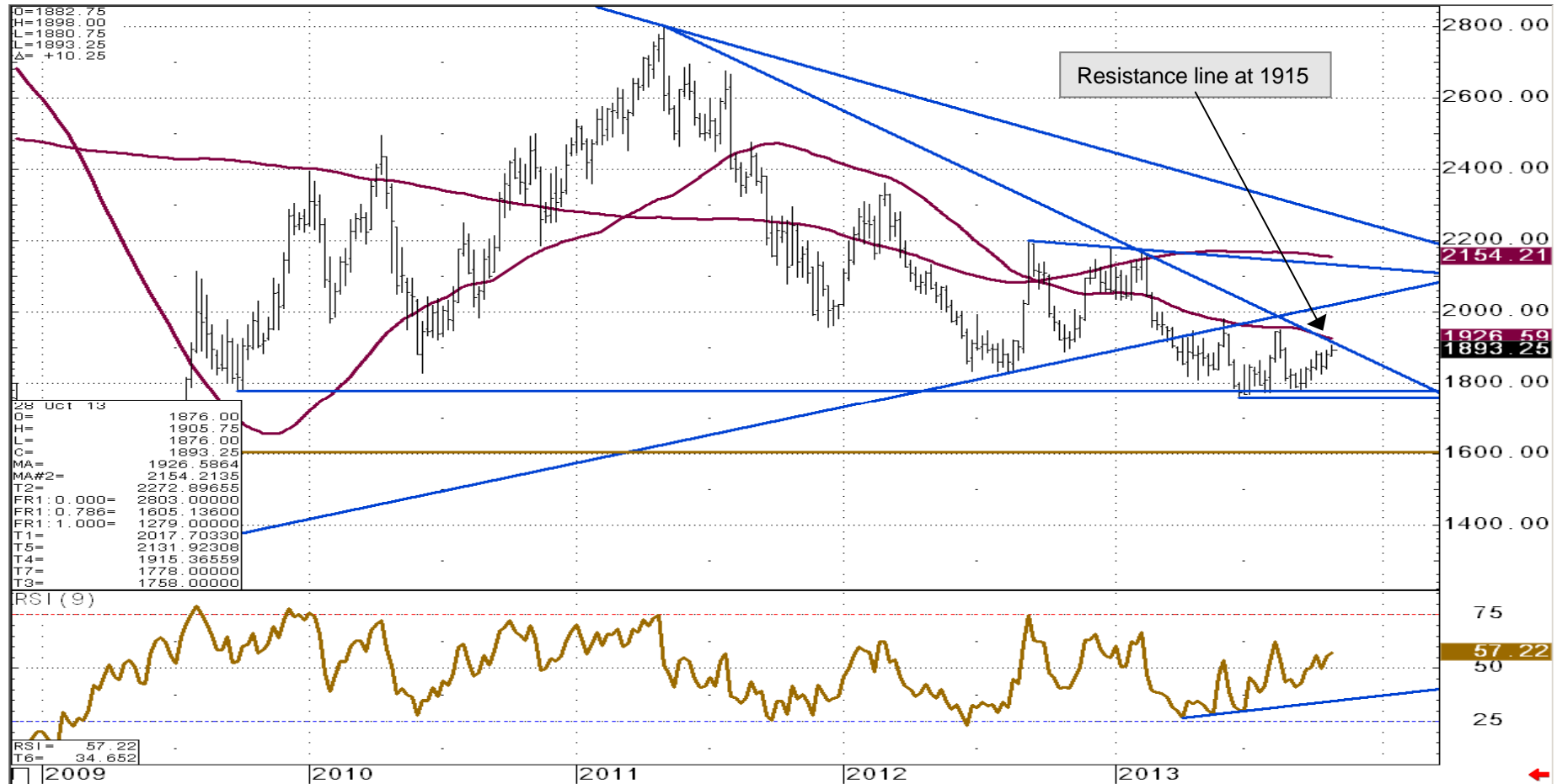
- › LME Aluminium rally higher has reached the 200 day ma at 1897. Directly above here lies the 1949/81 August and June highs and only if these were overcome would the chart picture alter enough to become more positive. Please note that the 2011-2013 resistance line cuts in at 1915.
- › Immediate upside pressure is maintained above the 55 day ma at 1846. However key support remains 1776/1758. This is where the October 2009 low and this year's June trough are to be found. This is strong support, however the market has been charting lower reaction highs since June and we suspect that this key support will eventually give way.
- › The chart remains negative while capped by the 1897/1981 resistance area (June high and 200 day moving average).
- › We continue to view aluminium as vulnerable on the downside longer term and have longer term downside targets which come in at 1701.00 June 2009 high and eventually the 78.6% Fibonacci retracement of the 2009-11 uptrend at 1605.14.
- › Only an unexpected daily close above 1981, the June peak, would force us to neutralise our outlook and imply a deeper upward retracement towards the 2031.75 January low.

LME Aluminium Daily Chart



LME Aluminium - weekly

2011-2013 resistance line at 1915



LME Nickel

Gearing up to challenge and we suspect overcome the 200 day ma at 15201

- > LME Nickel has held tightly sideways following its recent strong recovery and looks set to test the 15001 August high and 15201 200 day ma.
- > **The 13000/12978 area has been our medium term downside target for a while and we are alert to the idea of a more significant turn being seen here.** The latter is the 78.6% Fibonacci retracement of the 2008-11 rise. Failure there will push the 12844 April 2009 high and then the 11925 mid-May 2009 low into the picture (see the weekly chart on the following page). We would adopt a more positive outlook from a medium to longer term perspective.
- > Further up resistance lies at the 15236 August 2012 low, the 38.2% Fibonacci retracement of this year's decline at 15331 and the 15560/15600 May and June highs. The 2012-2013 resistance line lies at 17488.

LME Nickel Daily Chart



LME Nickel – Weekly Chart

The 13000/12978 area represents our medium term target zone

LME Nickel Weekly Chart



LME Zinc

Looking for a challenge of the 2009/2021 resistance

- › LME Zinc continues to rebound from the 4 month support line at 1866 and we would allow for another upside attempt. We have recently neutralised our view as we suspect that the market is attempting to base longer term.
- › A weekly close above the 2009 August high would cause us to adopt a more positive attitude.
- › Above 2009 would allow for a deeper recovery towards the 50% retracement at 2021 and perhaps even to the 61.8% Fibonacci retracement at 2070.
- › The 1864 support line is key for short term stability - below here will target the 1811.75 low. Current chart price action is regarded as neutral to short term positive.
- › Below the 1811.75 May low we would allow for losses to key support at 1745/1718.50, the lows seen in 2011 and 2012 .
- › These are expected to act as the break down point to 1577, the 2010 low.

LME Zinc Daily Chart



ICE ECX Carbon Emissions Dec 2013

Trendline holding ...but rebound indicated to remain tepid

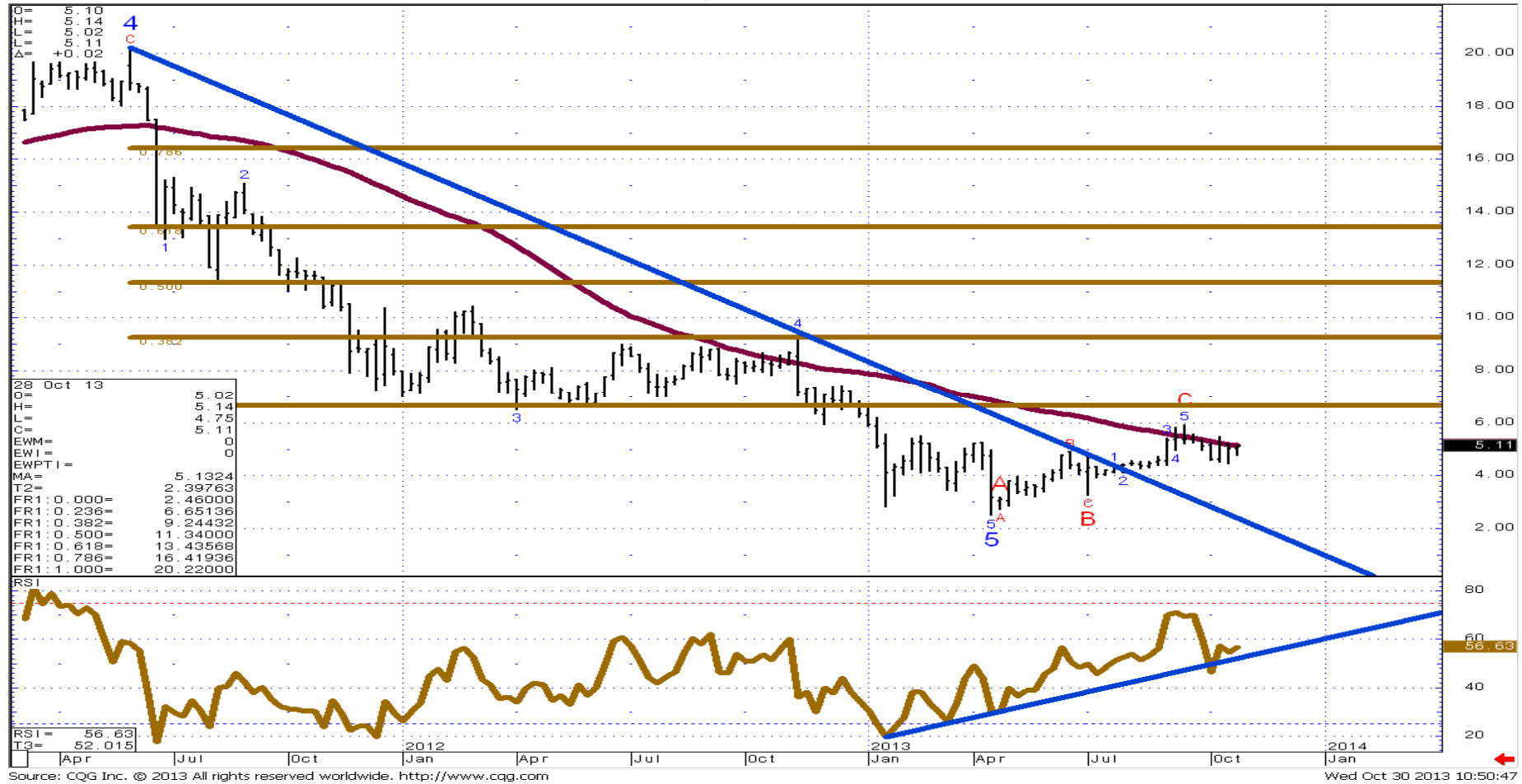
- › December 2013 ICE ECX Carbon Emissions have again tested and rebounded off the 6 month trend line, which is now located at 4.47. The intraday charts continue to suggest that the rebound is likely to be shallow and fail ahead of the previous high at 5.50.
- › Should this be the case the risk will increase for a break lower. Below 4.47 will target 4.19, the 509% retracement of the move up from April and introduce scope to the 3.78/61.8% retracement.
- › Provided that the market manages to hold the trend line and regain 5.50, we should see an attempt to recover and re-test of the 5.92/6.00 resistance area. Above 6.00 would suggest an extension to 6.48, the April 2012 low.
- › Below 3.78 implies losses back towards the 3.2500 July spike low.

ICE ECX Carbon Emissions Dec 2013 Daily Chart



ICE ECX Carbon Emissions Dec 2013 - weekly chart

Failure to close above the 55 week ma at 5.13 and recent failure at psychological resistance at 6.00 implies some downside pressure is likely to be seen short to medium term



Phelix January 2014

More positive BUT July high at 38.45 needs to be overcome to reassert upside pressure.

- > The Phelix Jan 2014 contract continues to see recovery from just ahead of the 36.83 78.6% retracement. The subsequent rebound has yet to regenerate enough upside momentum and ideally we would like to see the 38.43/45 July peak overcome to reignite upside pressure.
- > The 36.83 level represents the last defence for the 36.02 August low.
- > Currently downside risks are abating however to confirm further upside intent a close above 38.45 will be needed. Above here would allow for a test of the more important 200 day ma at 39.03 and the recent high at 39.85.
- > We suspect that from a longer term perspective that the market may be attempting to base but short term, allow for dips lower and more volatile choppy trading.

Phelix January 2014 Daily Chart



Phelix Janaury - weekly chart

Major divergence of the weekly RSI suggests a loss of long term downside pressure.

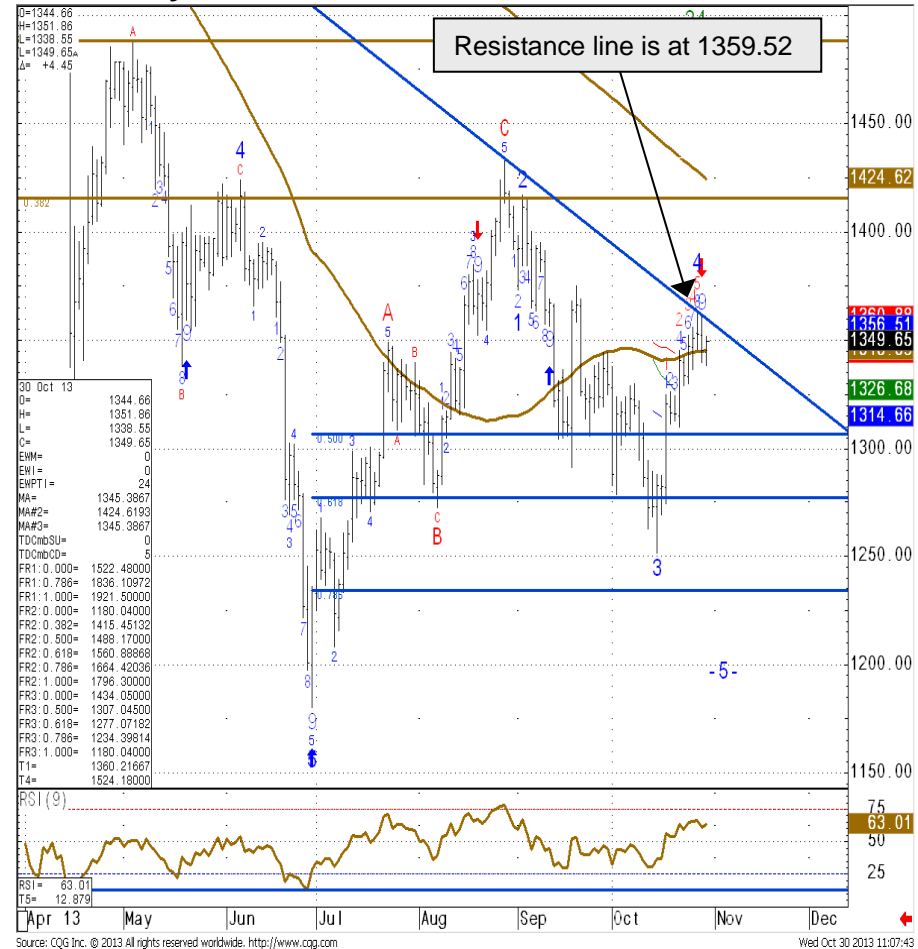


Gold - Daily Chart

Only the break of the 2013 resistance line at 1360 will confirm that another up leg is made

- › Gold continues its recent ascent, albeit with less vigour than before.
- › For our short- and medium term outlook to once again become bullish we would like to see at least two daily closes above the 2013 resistance line at 1360 being made this week.
- › In this case the late September high at 1375.37 should soon also be overcome with the 200 day moving average at 1425 and the August peak at 1434.05 as well as the 2012-13 resistance line at 1466.35 being back on the map.
- › Immediate upside pressure will be maintained while the gold price remains above the 1329.85 October 19 low on a daily chart closing basis.
- › Only a, for now less likely, slip to below the next lower 1310 October 22 low would reinstate a short term bearish view.

Gold Daily Chart

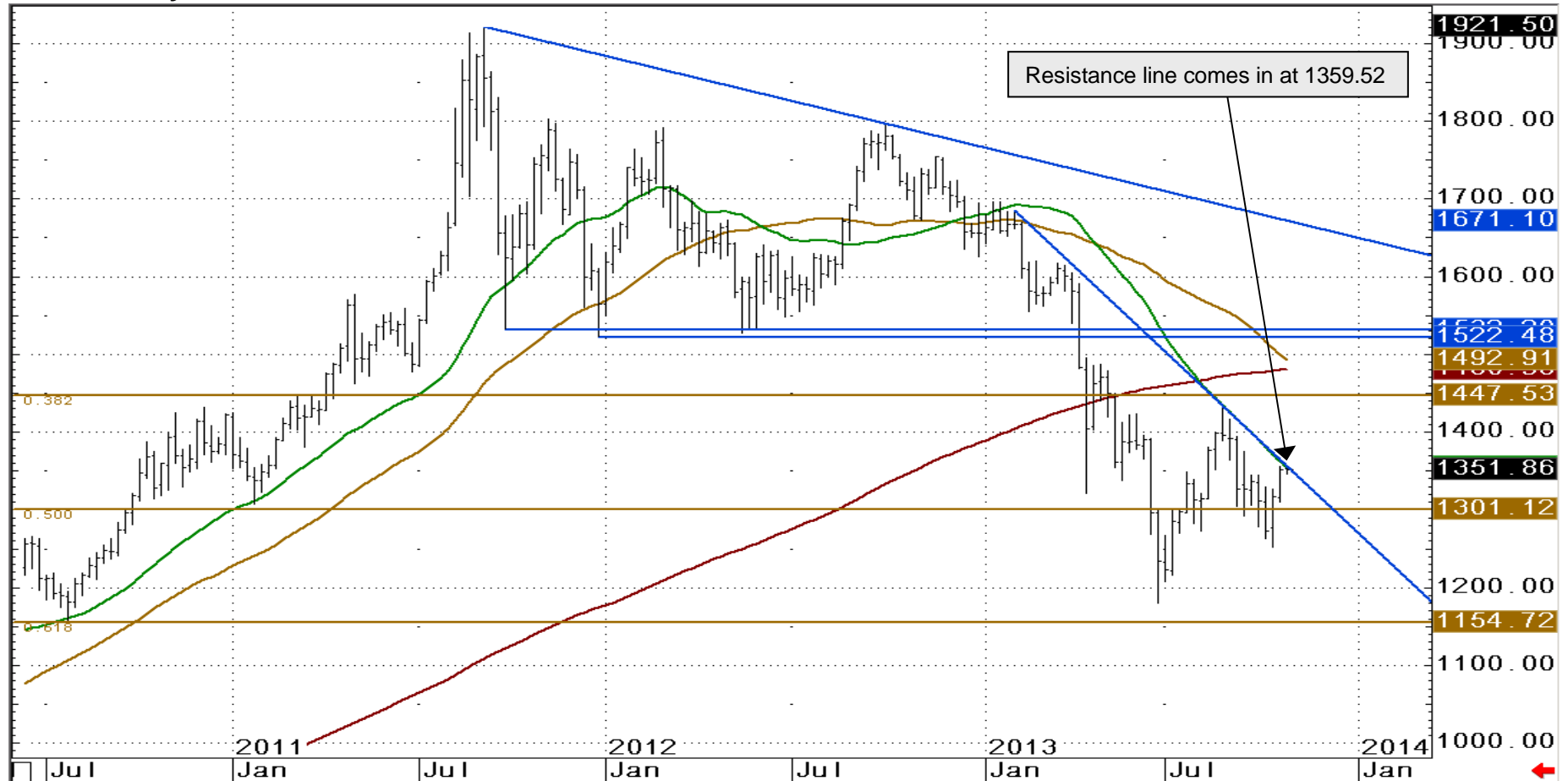


Support	Resistance	1-Week View	1-Month View
1329.8&1310.0	13560&1375.4	➔	➔
1307&1272.56	1425/34&1466		

Gold - Weekly Chart

Tries to break through the 2013 resistance line at 1359.52

Gold Weekly Chart



Source: CQG Inc. © 2013 All rights reserved worldwide. <http://www.cqg.com>

Mon Oct 28 2013 10:30:09

Additional Information

S&P GSCI

The S&P GSCI is world-production weighted; the quantity of each commodity in the index is determined by the average quantity of production in the last five years of available data. Such weighting provides the S&P GSCI with significant advantages, both as an economic indicator and as a measure of investment performance.

For use as an economic indicator, the appropriate weight to assign each commodity is in proportion to the amount of that commodity flowing through the economy (i.e., the actual production or consumption of that commodity). For instance, the impact that doubling the price of corn has on inflation and on economic growth depends directly on how much corn is used (or produced) in the economy.

From the standpoint of measuring investment performance, production weighting is not only appropriate but also vital. The key to measuring investment performance in a representative fashion is to weight each asset by the amount of capital dedicated to holding that asset. In equity markets, this representative measurement of investment performance is accomplished through weighting indices by market capitalization.

For commodities, there is no direct counterpart to market capitalization. The problem is that commodities, and the related price risks, are held in a variety of ways – long futures positions, over-the-counter investments, long-term fixed price purchasing contracts, physical inventory at the producer, etc. - making a complete accounting of capital dedicated to holding commodities from the time they are produced to the time they are consumed infeasible. A simple way to achieve a close analogue to true market capitalization, abstracting from differences in inventory patterns, is to note that the net long position of the economy is proportional to the quantity produced - hence, production weighting.

The S&P GSCI Total Return Index measures the returns accrued from investing in fully-collateralized nearby commodity futures;

Technical Analysis Research **COMMERZBANK**

Daily Market Technicals
FX Outlook

Karen Jones
+44 202 475 1620
karen.jones@commerzbank.com



For important disclosure information please see pages 14 and 15.

Technical Analysis Research **COMMERZBANK**

Strategic Technical Themes
Weekly Outlook and Technical Highlights

Karen Jones
+44 202 475 1620
karen.jones@commerzbank.com

Azul Rutiglian
+44 202 475 6721
azul.rutiglian@commerzbank.com



For important disclosure information please see pages 28 and 29.

Technical Analysis Research **COMMERZBANK**

FX Emerging Markets Weekly Technicals
Technical Outlook

Azul Rutiglian
+44 202 475 6721
azul.rutiglian@commerzbank.com



For important disclosure information please see pages 16 and 15.

Technical Analysis Research **COMMERZBANK**

Bullion Weekly Technicals
Technical Outlook

Azul Rutiglian
+44 202 475 6721
azul.rutiglian@commerzbank.com

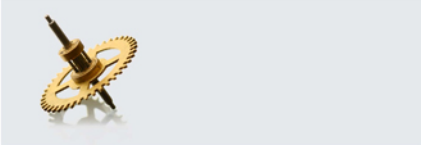


For important disclosure information please see pages 12 and 14.

Technical Analysis Research **COMMERZBANK**

Commodity Currencies Weekly Technicals
Technical Outlook

Azul Rutiglian
+44 202 475 6721
azul.rutiglian@commerzbank.com



For important disclosure information please see pages 14 and 15.

Technical Analysis Research **COMMERZBANK**

Commodity Weekly Technicals
Technical Outlook

Karen Jones
+44 202 475 1620
karen.jones@commerzbank.com

Azul Rutiglian
+44 202 475 6721
azul.rutiglian@commerzbank.com




For important disclosure information please see pages 21 and 22.

Technical Analysis Research **COMMERZBANK**

Asian Currencies Weekly Technicals
Technical Outlook

Azul Rutiglian
+44 202 475 6721
azul.rutiglian@commerzbank.com



For important disclosure information please see pages 24 and 25.

Technical Analysis Research **COMMERZBANK**

Fixed Income Weekly Technicals
Technical Outlook

Karen Jones
+44 202 475 1620
karen.jones@commerzbank.com

Azul Rutiglian
+44 202 475 6721
azul.rutiglian@commerzbank.com



For important disclosure information please see pages 33 and 34.

Other technical analysis reports we publish are:

- Monday:** Daily Market Technicals (FX), Strategic Technical Themes, FX Emerging Markets Technicals;
- Tuesday:** Daily Market Technicals (FX), Bullion Weekly Technicals;
- Wednesday:** Daily Market Technicals (FX), Commodity Currencies Weekly Technicals;
- Thursday:** Daily Market Technicals (FX), Asian Currencies Weekly Technicals, FX Strategy;
- Friday:** Daily Market Technicals (FX), Fixed Income Weekly Technicals.

This document has been created and published by the Corporates & Markets division of Commerzbank AG, Frankfurt/Main or Commerzbank's branch offices mentioned in the document. Commerzbank Corporates & Markets is the investment banking division of Commerzbank, integrating research, debt, equities, interest rates and foreign exchange. The author(s) of this report, certify that (a) the views expressed in this report accurately reflect their personal views; and (b) no part of their compensation was, is, or will be directly or indirectly related to the specific recommendation(s) or views expressed by them contained in this document. The analyst(s) named on this report are not registered / qualified as research analysts with FINRA and are not subject to NASD Rule 2711.

Disclaimer

This document is for information purposes only and does not take account of the specific circumstances of any recipient. The information contained herein does not constitute the provision of investment advice. It is not intended to be and should not be construed as a recommendation, offer or solicitation to acquire, or dispose of, any of the financial instruments mentioned in this document and will not form the basis or a part of any contract or commitment whatsoever.

The information in this document is based on data obtained from sources believed by Commerzbank to be reliable and in good faith, but no representations, guarantees or warranties are made by Commerzbank with regard to accuracy, completeness or suitability of the data. The opinions and estimates contained herein reflect the current judgement of the author(s) on the data of this document and are subject to change without notice. The opinions do not necessarily correspond to the opinions of Commerzbank. Commerzbank does not have an obligation to update, modify or amend this document or to otherwise notify a reader thereof in the event that any matter stated herein, or any opinion, projection, forecast or estimate set forth herein, changes or subsequently becomes inaccurate.

The past performance of financial instruments is not indicative of future results. No assurance can be given that any opinion described herein would yield favourable investment results. Any forecasts discussed in this document may not be achieved due to multiple risk factors including without limitation market volatility, sector volatility, corporate actions, the unavailability of complete and accurate information and/or the subsequent transpiration that underlying assumptions made by Commerzbank or by other sources relied upon in the document were inapposite.

Neither Commerzbank nor any of its respective directors, officers or employees accepts any responsibility or liability whatsoever for any expense, loss or damages arising out of or in any way connected with the use of all or any part of this document.

Commerzbank may provide hyperlinks to websites of entities mentioned in this document, however the inclusion of a link does not imply that Commerzbank endorses, recommends or approves any material on the linked page or accessible from it. Commerzbank does not accept responsibility whatsoever for any such material, nor for any consequences of its use.

This document is for the use of the addressees only and may not be reproduced, redistributed or passed on to any other person or published, in whole or in part, for any purpose, without the prior, written consent of Commerzbank. The manner of distributing this document may be restricted by law or regulation in certain countries, including the United States. Persons into whose possession this document may come are required to inform themselves about and to observe such restrictions. By accepting this document, a recipient hereof agrees to be bound by the foregoing limitations

Additional notes to readers in the following countries:

Germany: Commerzbank AG is registered in the Commercial Register at Amtsgericht Frankfurt under the number HRB 32000. Commerzbank AG is supervised by the German regulator Bundesanstalt für Finanzdienstleistungsaufsicht (BaFin), Marie-Curie-Strasse 24-28, 60439 Frankfurt am Main, Germany.

United Kingdom: This document has been issued or approved for issue in the United Kingdom by Commerzbank AG London Branch. Commerzbank AG, London Branch is authorised by Bundesanstalt für Finanzdienstleistungsaufsicht (BaFin) and subject to limited regulation by the Financial Conduct Authority and Prudential Regulation Authority. Details on the extent of our regulation by the Financial Conduct Authority and Prudential Regulation Authority are available from us on request. This document is directed exclusively to eligible counterparties and professional clients. It is not directed to retail clients. No persons other than an eligible counterparty or a professional client should read or rely on any information in this document. Commerzbank AG, London Branch does not deal for or advise or otherwise offer any investment services to retail clients.

United States: Commerz Markets LLC ("Commerz Markets"): This document has been approved for distribution in the US under applicable US law by Commerz Markets, a wholly owned subsidiary of Commerzbank and a US registered broker-dealer. Any securities transaction by US persons must be effected with Commerz Markets. Under applicable US law; information regarding clients of Commerz Markets may be distributed to other companies within the Commerzbank group. This research report is intended for distribution in the United States solely to "institutional investors" and "major U.S. institutional investors," as defined in Rule 15a-6 under the Securities Exchange Act of 1934. Commerz Markets is a member of FINRA and SIPC.

Canada: The information contained herein is not, and under no circumstances is to be construed as, a prospectus, an advertisement, a public offering, an offer to sell securities described herein, solicitation of an offer to buy securities described herein, in Canada or any province or territory thereof. Any offer or sale of the securities described herein in Canada will be made only under an exemption from the requirements to file a prospectus with the relevant Canadian securities regulators and only by a dealer properly registered under applicable securities laws or, alternatively, pursuant to an exemption from the dealer registration requirement in the relevant province or territory of Canada in which such offer or sale is made. Under no circumstances is the information contained herein to be construed as investment advice in any province or territory of Canada and is not tailored to the needs of the recipient. In Canada, the information contained herein is intended solely for distribution to Permitted Clients (as such term is defined in National Instrument 31-103) with whom Commerz Markets LLC deals pursuant to the international dealer exemption. To the extent that the information contained herein references securities of an issuer incorporated, formed or created under the laws of Canada or a province or territory of Canada, any trades in such securities may not be conducted through Commerz Markets LLC. No securities commission or similar regulatory authority in Canada has reviewed or in any way passed upon these materials, the information contained herein or the merits of the securities described herein and any representation to the contrary is an offence.

European Economic Area: Where this document has been produced by a legal entity outside of the EEA, the document has been re-issued by Commerzbank AG, London Branch for distribution into the EEA.

Singapore: This document is furnished in Singapore by Commerzbank AG, Singapore branch. It may only be received in Singapore by an institutional investor as defined in section 4A of the Securities and Futures Act, Chapter 289 of Singapore ("SFA") pursuant to section 274 of the SFA.

Hong Kong: This document is furnished in Hong Kong by Commerzbank AG, Hong Kong Branch, and may only be received in Hong Kong by 'professional investors' within the meaning of Schedule 1 of the Securities and Futures Ordinance (Cap.571) of Hong Kong and any rules made there under.

Japan: Commerzbank AG, Tokyo Branch is responsible for the distribution of Research in Japan. Commerzbank AG, Tokyo Branch is regulated by the Japanese Financial Services Agency (FSA).

Australia: Commerzbank AG does not hold an Australian financial services licence. This document is being distributed in Australia to wholesale customers pursuant to an Australian financial services licence exemption for Commerzbank AG under Class Order 04/1313. Commerzbank AG is regulated by Bundesanstalt für Finanzdienstleistungsaufsicht (BaFin) under the laws of Germany which differ from Australian laws.

© Commerzbank AG 2013. All rights reserved. Version 9.16

Commerzbank Corporates & Markets

Frankfurt	London	New York	Singapore Branch	Hong Kong Branch
Commerzbank AG	Commerzbank AG London Branch	Commerz Markets LLC	Commerzbank AG	Commerzbank AG
DLZ - Gebäude 2, Händlerhaus Mainzer Landstraße 153 60327 Frankfurt	PO BOX 52715 30 Gresham Street London, EC2P 2XY	2 World Financial Center, 32nd floor New York, NY 10020-1050 Tel: + 1 212 703 4000	71 Robinson Road, #12-01 Singapore 068895 Tel: +65 631 10000	29/F, Two IFC 8 Finance Street Central Hong Kong Tel: +852 3988 0988
Tel: + 49 69 136 21200	Tel: + 44 207 623 8000			



Karen Jones
Head of FICC Technical Analysis

Tel. +44 207 475 1425
Mail karen.jones@commerzbank.com

Axel Rudolph
Senior FICC Technical Analyst

Tel. +44 207 475 5721
Mail axel.rudolph@commerzbank.com

Zentrale
Kaiserplatz
Frankfurt am Main
www.commerzbank.de

Postfachanschrift
60261 Frankfurt am Main
Tel. +49 (0)69 / 136-20
Mail info@commerzbank.com